



SH600549



CEMENTED CARBIDE WEAR SOLUTIONS FOR OIL & GAS INDUSTRY



JIUJIANG GOLDEN EGRET HARD MATERIAL CO.,LTD

Company Profile

As a joint venture by Xiamen Tungsten Co., Ltd (XTC) and China Minmetals Groups, Jiujiang Golden Egret Hard Material Co., Ltd (GEHM) is a comprehensive company specializing in manufacturing tungsten powder, tungsten carbide powder and cemented carbide products.

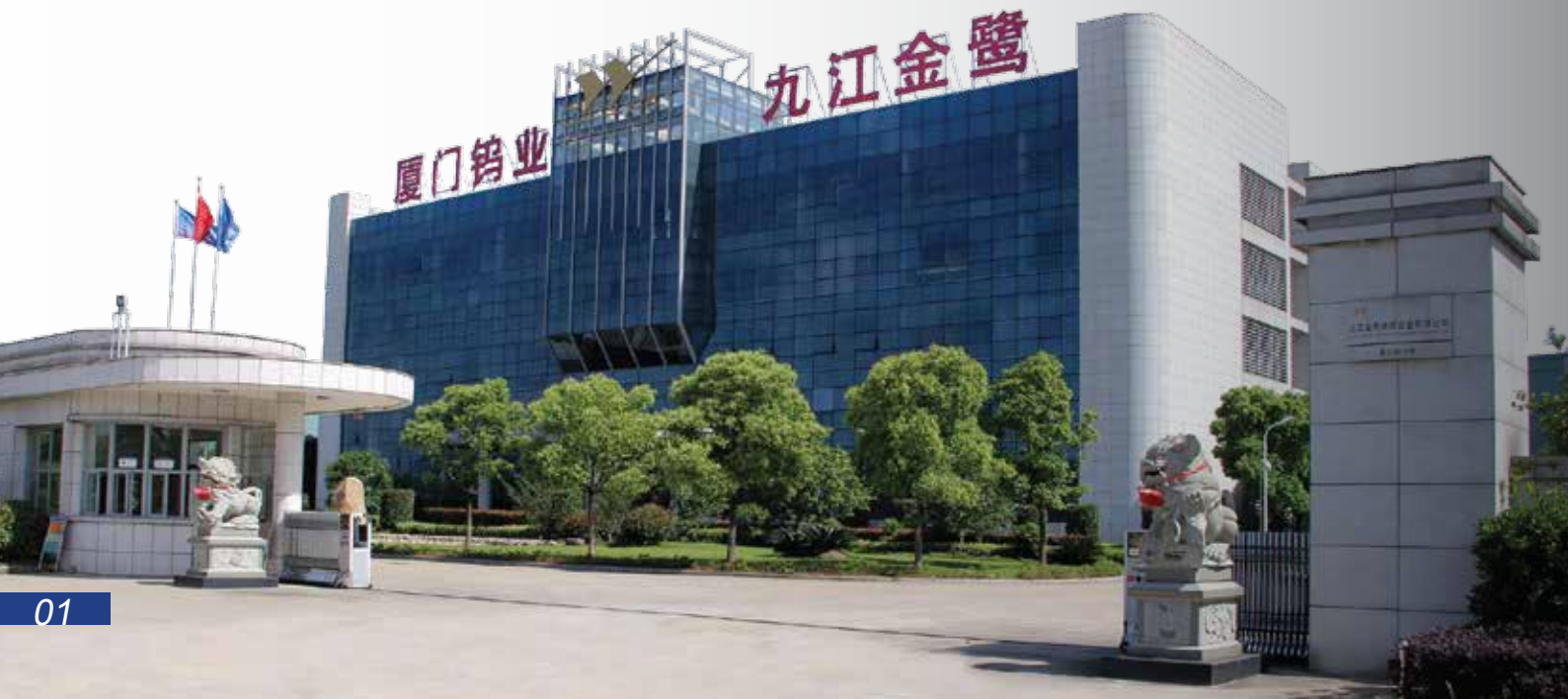
XTC is a fully-integrated tungsten supplier, managing the complete manufacturing cycle of tungsten materials from ores to finished cemented carbide tools, occupying more than 1/3 of the cemented carbide exporting volumes in China. XTC is a highly research oriented enterprise owning the China National Tungsten R & D Center, managing the entire and latest process of tungsten related technology to ensure that our products are the highest quality-all the time.

Oil & Gas industry is and always faces aggressive & atrocious environment that full of corrosion, erosion, abrasiveness, impacting, high pressure and temperature. Our cemented carbide products included in this catalog but not limited to are specially developed to address those needs as well as other unique needs from each customer.



Complete Industry Chain

Honest / Innovative / Quality / Efficient



Contents

A

General Information

Company Profile	01
Golden Egret Cemented Carbide	03
Grade Offering	04

B

Wear Solutions for Oil & Gas Industry

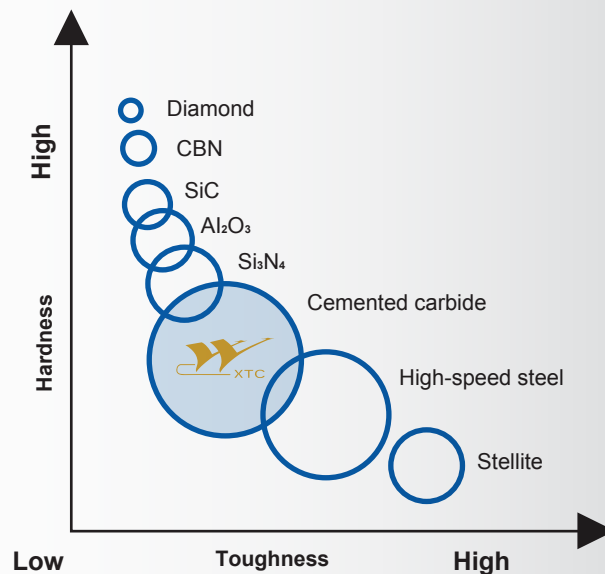
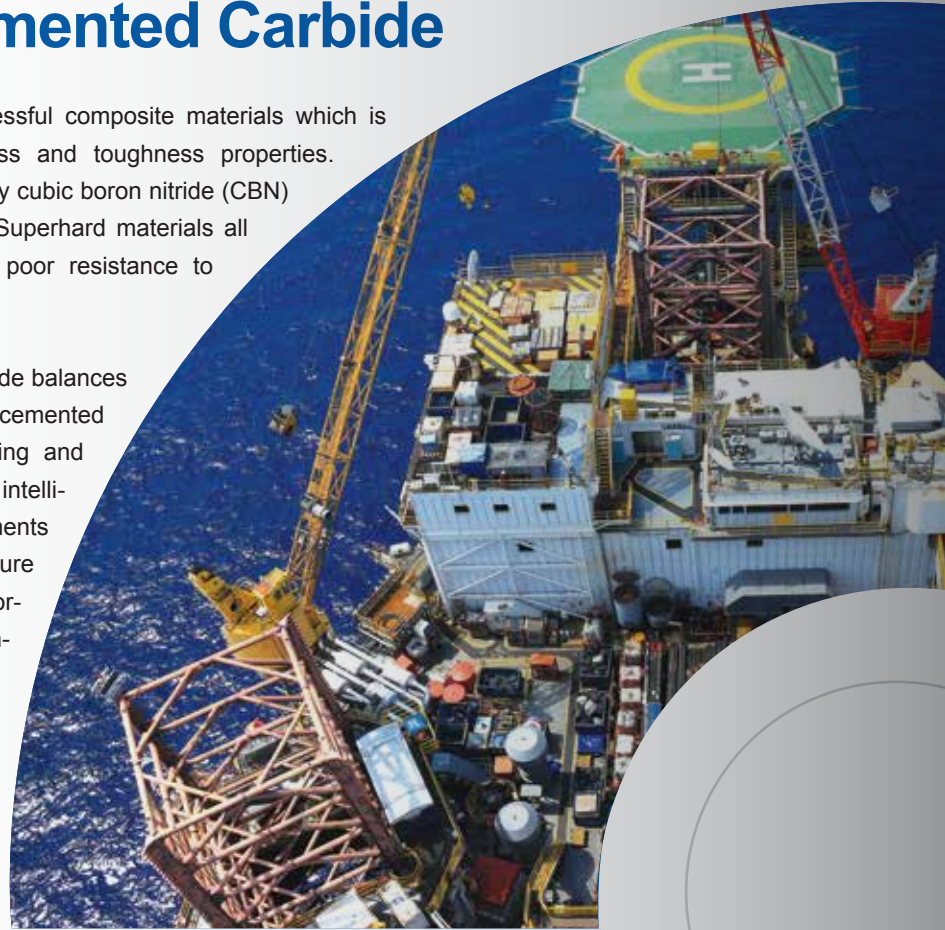
Cemented Carbide Accessories for MWD & LWD	05-07
Cemented Carbide Nozzles & Accessories for Drill Bits	
• Nozzles for PDC Drill Bits	09-12
• Nozzles for Roller Cone Drill Bits	13-14
Cemented Carbide Sleeves for Oil Pump	
• Sleeves for Electric Submersible Pump	16-19
Cemented Carbide Wear Parts for Valves	
• Valve Ball & Seat	21
• Valve Disk	22-24
Gage Bricks & Stabilizer Blanks	25-26

Golden Egret Cemented Carbide

Cemented carbide is one of the most successful composite materials which is shown schematically relative to its hardness and toughness properties. Diamond (PDC) is the hardest one, followed by cubic boron nitride (CBN) and the ceramics (Al_2O_3 , SiC, Sialon, etc). Superhard materials all have problem that lowered toughness and poor resistance to sudden fracture.

As shown in the diagram, only cemented carbide balances hardness and toughness, which makes cemented carbide become ideal material for engineering and tooling applications. Cemented carbide is an intelligent material to meet a wide range of requirements since its composition could be varied to ensure maximum combined resistance to wear, deformation, corrosion, erosion, fracture, and toughness.

Oil & Gas industry is and always faces aggressive & atrocious environment that full of corrosion, erosion, abrasiveness, impacting, high pressure and temperature. Thus, cemented carbide would be the best choice of wear solutions for Oil & Gas industry.



Grade Offering

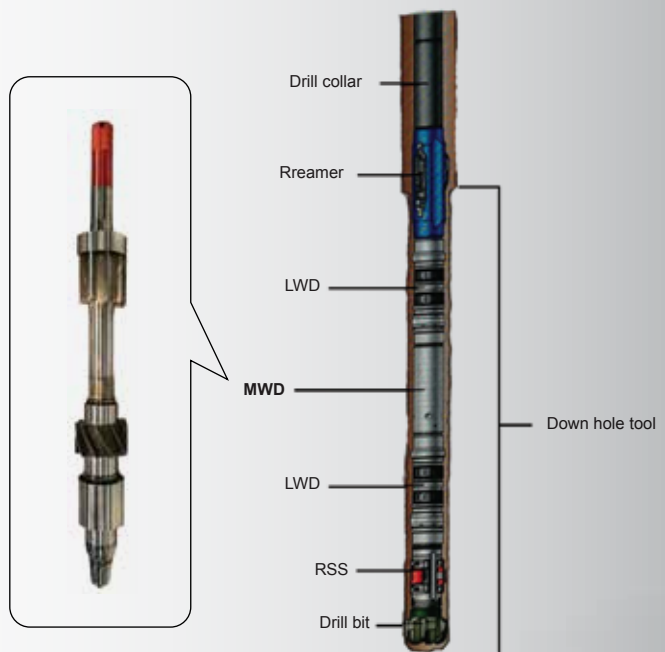
Jiujiang Golden Egret's grade offering is as diverse as the range of industries we provide solutions to. A collection of grades have been developed to specifically serve the needs of the Oil & Gas industry.

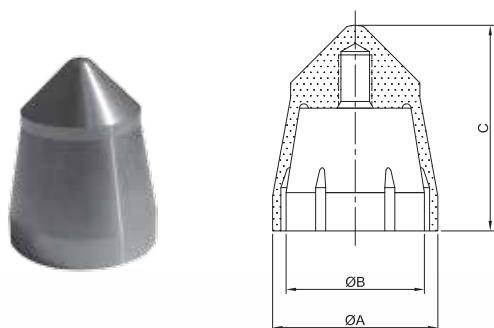
Grades	Physical Properties			Areas of Application			Major characteristics and application
	Hardness	Density	TRS	Corrosion	Erosion	Toughness	
	HRA	g/cm ³	N/mm ³	C	E	T	
GF50H	88.2-89.2	13.95-14.15	≥3000	▲	●	■	It's suitable to produce sleeves and other wear parts used in oil & gas and chemistry industry due to high impact-resistance and wear resistance.
GK35	88.5-89.5	14.30-14.50	≥2800	▲	●	■	It's suitable to produce sleeves, bushings and nozzles due to high hardness and good wear-resistance.
GV25	88.7-89.7	14.20-14.50	≥3200	▲	■	●	It's suitable to produce high pressure nozzles, threaded nozzles, bushings and valves used in oil & gas and chemistry industry due to high impact-resistance and wear resistance.
GK40A	90.5-91.5	14.50-14.70	≥2800	●	■	▲	It's suitable to produce sleeves and nozzles used in oil & gas industry due to high hardness and good wear-resistance.
GK30H	89.5-90.5	14.70-14.80	≥2800	▲	●	■	It's suitable to produce sleeves and bushings due to good wear resistance and toughness.
GU10	92.5-93.5	14.80-15.00	≥2700	▲	●	■	It's suitable to produce sleeves and bushings due to high hardness and good wear-resistance.
GK05A	92.0-93.0	14.80-15.00	≥2450	▲	●	■	It's suitable to produce wear parts used for oil-immersed pump, valve point and valve seat due to excellent wear resistance and high toughness.
GA25N	88.3-89.3	13.85-14.05	≥2700	●	■	▲	It's suitable to produce wear tiles for stabilizer and other parts used in oil & gas industry due to good wear-resistance and corrosion resistance.
GD10N	87.5-89.0	14.40-14.60	≥2400	●	■	■	It's suitable to produce valve balls and seats as well as other valve products used in oil & gas industry due to excellent corrosion & erosion resistance.
GD06N	89.0-90.5	14.80-15.00	≥1900	●	■	▲	It's suitable to produce valve balls and seats as well as other valve products used in oil & gas industry due to excellent corrosion & erosion resistance.
GF06N	90.2-91.2	14.80-15.00	≥1760	●	■	▲	It's suitable to produce sleeves and bushings used in oil & gas industry due to excellent corrosion & erosion resistance.
GT50B	89.5-90.5	9.20-9.40	≥1200	●	■	▲	It's suitable to produce valve balls and seats used in oil & gas industry due to excellent corrosion & erosion resistance.

● Recommended application area ■ Secondary application area ▲ Alternative application area

Cemented Carbide Accessories For MWD & LWD

The accessories and components in this section are mainly used on down hole drill tools, MWD and LWD, for the function of flushing, slurry sealing, flow diversion, and sending slurry pressure and other information back with pulse signal. It works in very severe and adverse conditions of high corrosion, erosion and high temperature.

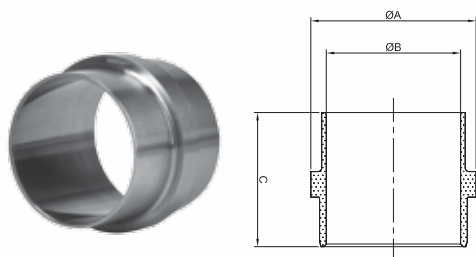




Lift valve

Unit: mm

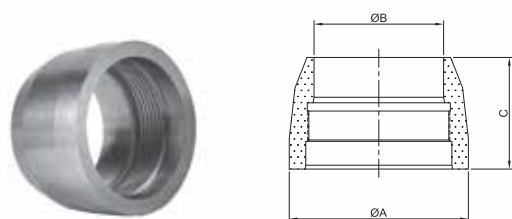
Stock No.	ΦA	ΦB	C
NX061002	49.0	42.0	61.5



Upper wear sleeve

Unit: mm

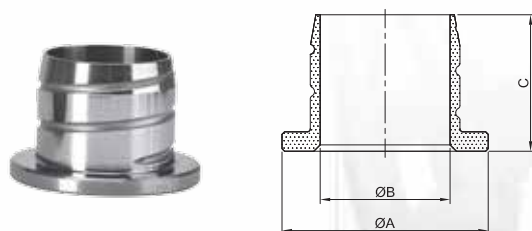
Stock No.	ΦA	ΦB	C
NX046001	46.9	38.2	38.1



Nose cap

Unit: mm

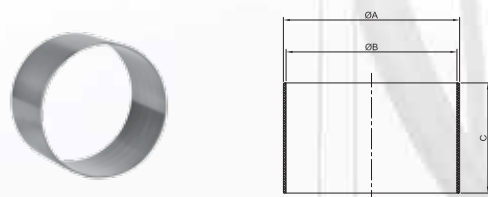
Stock No.	ΦA	ΦB	C
NX091007	65.0	47.0	40.5



Lower bearing sleeve

Unit: mm

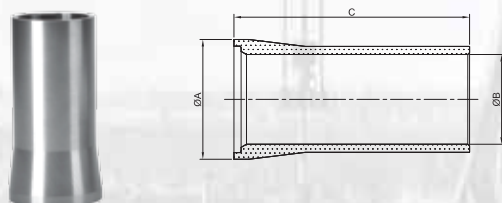
Stock No.	ΦA	ΦB	C
NX103901	62.1	39.0	41.1
HX030014	50.0	30.0	41.0



Wear sleeve

Unit: mm

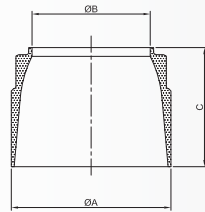
Stock No.	ΦA	ΦB	C
HH108205	85.4	80.6	53.0



Spacer sleeve

Unit: mm

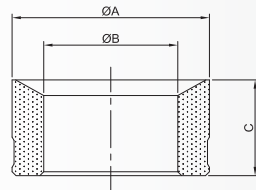
Stock No.	ΦA	ΦB	C
NX045011	52.4	41.3	110.5



Bush raising valve

Unit: mm

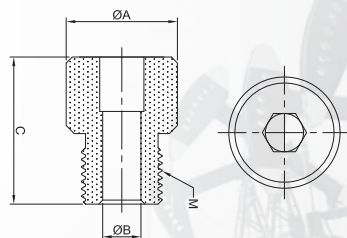
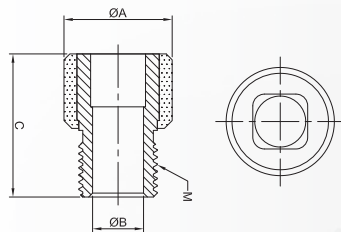
Stock No.	ΦA	ΦB	C
PF1841101	83.0	50.5	37.8
PF1712801	73.2	53.6	55.3
PF1961501	94.2	70.4	35.8



Flow limitation ring

Unit: mm

Stock No.	ΦA	ΦB	C
HX035011	50.5	35.6	24.5
HX038006	50.5	38.1	24.5
HX030011	50.5	30.5	24.5
HX032007	50.5	32.5	24.5
HX034009	50.5	34.3	24.5
HX045006	61.9	45.0	29.0
HX032008	50.7	32.5	24.5
HX034010	50.7	34.3	24.5
HX035012	50.7	35.6	24.5
HX038007	50.7	38.1	24.5
HX030012	50.7	30.5	24.5
HX026008	40.0	26.2	22.0
HX028022	40.0	28.5	22.0
HX030015	40.0	30.5	22.0
HX032011	40.0	32.1	22.0



Main valve core

Unit: mm

Stock No.	ΦA	ΦB	C	M
NX013026	26.4	13.0	36.5	M20X2
NX013027	27.6	13.0	36.5	M20X2
NX013028	28.5	13.0	36.5	M20X2
NX013030	30.5	13.0	36.5	M20X2

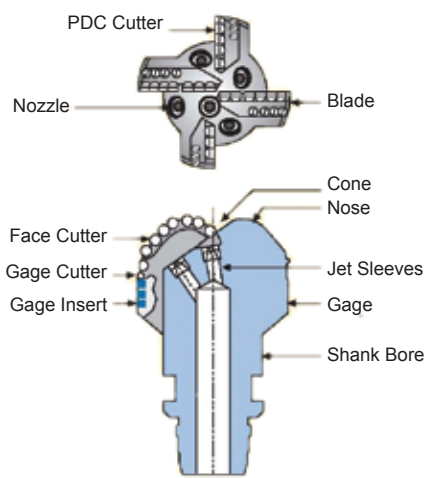
Stock No.	ΦA	ΦB	C	M
NX009026	26.4	9.5	37.0	7/8-14UNF-2A
NX009027	27.6	9.5	37.0	7/8-14UNF-2A
NX009028	28.5	9.5	37.0	7/8-14UNF-2A
NX009030	30.5	9.5	37.0	7/8-14UNF-2A

Cemented Carbide Nozzles & Accessories for Drill Bits

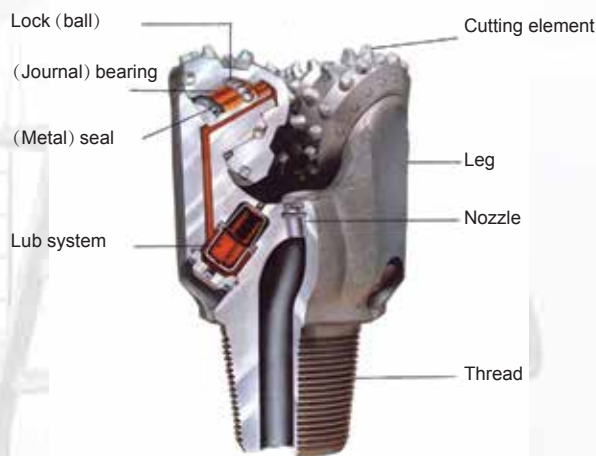


The cemented carbide nozzles are mainly used for PDC drill bits and roller cone bits for flushing, cooling and lubricating drill bit cutters. Meanwhile, the high pressure fluid jetted out of the nozzles will help break down the rock.

As a fully-integrated supplier, we provide nozzles in a wide range of styles and sizes combinations for most down-hole drilling applications. Grades are designed for excellent corrosion & erosion resistance. Custom-molded nozzles could be provided upon drawings and grade requirements from customers.

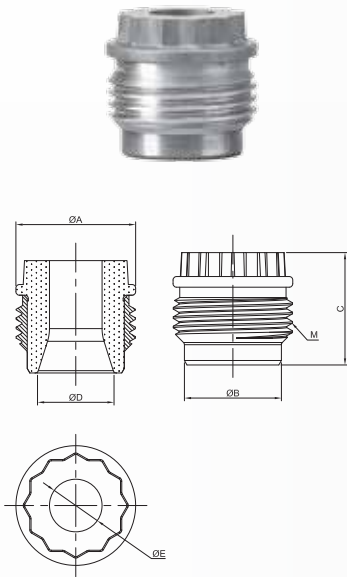


PDC drill bit



Roller cone bit

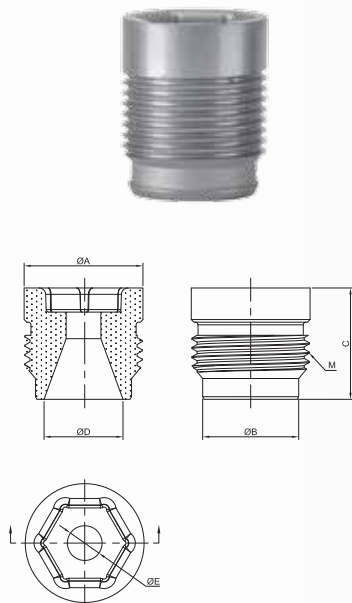
Nozzles for PDC Drill Bits



Threaded nozzle of plumblossom teeth wrench series

Unit: mm

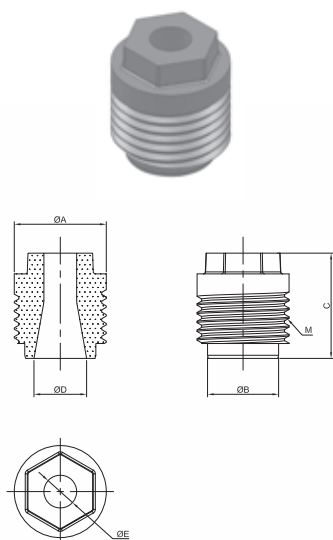
Stock No.	ΦA	C	ΦE	M
PDX100702	27.1	25.4	5.6	1-1/16-12UN-2A
PDX100802	27.1	25.4	6.4	1-1/16-12UN-2A
PDX100902	27.1	25.4	7.1	1-1/16-12UN-2A
PDX101002	27.1	25.4	7.9	1-1/16-12UN-2A
PDX101102	27.1	25.4	8.7	1-1/16-12UN-2A
PDX101202	27.1	25.4	9.5	1-1/16-12UN-2A
PDX101302	27.1	25.4	10.3	1-1/16-12UN-2A
PDX101402	27.1	25.4	11.1	1-1/16-12UN-2A
PDX101502	27.1	25.4	11.9	1-1/16-12UN-2A
PDX101602	27.1	25.4	12.7	1-1/16-12UN-2A
PDX101702	27.1	25.4	13.5	1-1/16-12UN-2A
PDX101802	27.1	25.4	14.3	1-1/16-12UN-2A
PDX101902	27.1	25.4	15.1	1-1/16-12UN-2A
PDX102002	27.1	25.4	15.9	1-1/16-12UN-2A
PDX102102	27.1	25.4	16.7	1-1/16-12UN-2A
PDX102202	27.1	25.4	17.5	1-1/16-12UN-2A



Threaded nozzle of inner hexagon wrench series

Unit: mm

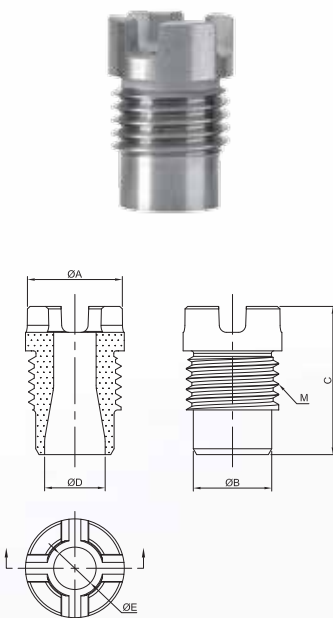
Stock No.	ΦA	C	ΦE	M
PDN200601	27.1	25.4	6.4	1"-1/16-12UN-2A
PDN200701	27.1	25.4	7.1	1"-1/16-12UN-2A
PDN200801	27.1	25.4	7.9	1"-1/16-12UN-2A
PDN200901	27.1	25.4	9.5	1"-1/16-12UN-2A
PDN201101	27.1	25.4	11.1	1"-1/16-12UN-2A
PDN201301	27.1	25.4	12.7	1"-1/16-12UN-2A
PDN201401	27.1	25.4	14.3	1"-1/16-12UN-2A
PDN201601	27.1	25.4	15.9	1"-1/16-12UN-2A
PDN300501	19.1	23.0	5.6	3/4"-12UN-2A
PDN300601	19.1	23.0	6.4	3/4"-12UN-2A
PDN300701	19.1	23.0	7.1	3/4"-12UN-2A
PDN300801	19.1	23.0	7.9	3/4"-12UN-2A
PDN300901	19.1	23.0	9.5	3/4"-12UN-2A
PDN301101	19.1	23.0	11.1	3/4"-12UN-2A



Threaded nozzle of hexagon wrench series

Unit: mm

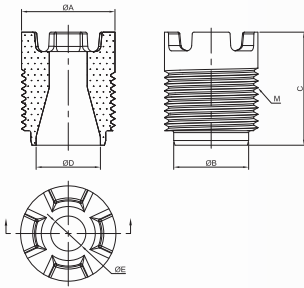
Stock No.	ΦA	C	ΦE	M
PDX200702	25.4	28.6	7.1	1"-14UNS-2A
PDX200802	25.4	28.6	7.9	1"-14UNS-2A
PDX200902	25.4	28.6	8.7	1"-14UNS-2A
PDX201002	25.4	28.6	9.5	1"-14UNS-2A
PDX200102	25.4	28.6	10.3	1"-14UNS-2A
PDX201102	25.4	28.6	1.1	1"-14UNS-2A
PDX201202	25.4	28.6	11.9	1"-14UNS-2A
PDX201302	25.4	28.6	12.7	1"-14UNS-2A
PDX201402	25.4	28.6	13.5	1"-14UNS-2A
PDX201502	25.4	28.6	14.3	1"-14UNS-2A
PDX201602	25.4	28.6	15.1	1"-14UNS-2A
PDX201702	25.4	28.6	15.9	1"-14UNS-2A



Threaded nozzle of castle top wrench series

Unit: mm

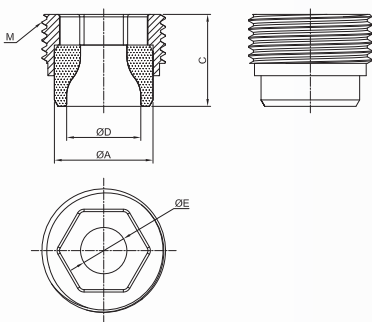
Stock No.	ΦA	C	ΦE	M
PDD500701	20.3	30.5	5.6	3/4"-12UN-2A
PDD500801	20.3	30.5	6.4	3/4"-12UN-2A
PDD500901	20.3	30.5	7.1	3/4"-12UN-2A
PDD501001	20.3	30.5	7.9	3/4"-12UN-2A
PDD501101	20.3	30.5	8.7	3/4"-12UN-2A
PDD501201	20.3	30.5	9.5	3/4"-12UN-2A
PDD501301	20.3	30.5	10.3	3/4"-12UN-2A
PDD501401	20.3	30.5	11.1	3/4"-12UN-2A
PDD501501	20.3	30.5	11.9	3/4"-12UN-2A
PDD501601	20.3	30.5	12.7	3/4"-12UN-2A



Threaded nozzle of castle top wrench series

Unit: mm

Stock No.	ΦA	C	ΦE	M
PDD200902	25.4	30.7	7.1	1"-14UNS-2A
PDD201002	25.4	30.7	7.9	1"-14UNS-2A
PDD201102	25.4	30.7	8.7	1"-14UNS-2A
PDD201202	25.4	30.7	9.5	1"-14UNS-2A
PDD201302	25.4	30.7	10.3	1"-14UNS-2A
PDD201402	25.4	30.7	11.1	1"-14UNS-2A
PDD201502	25.4	30.7	11.9	1"-14UNS-2A
PDD201602	25.4	30.7	12.7	1"-14UNS-2A
PDD201702	25.4	30.7	13.5	1"-14UNS-2A
PDD201802	25.4	30.7	14.3	1"-14UNS-2A
PDD201902	25.4	30.7	15.1	1"-14UNS-2A
PDD202002	25.4	30.7	15.9	1"-14UNS-2A
PDD202102	25.4	30.7	16.7	1"-14UNS-2A
PDD202202	25.4	30.7	17.5	1"-14UNS-2A



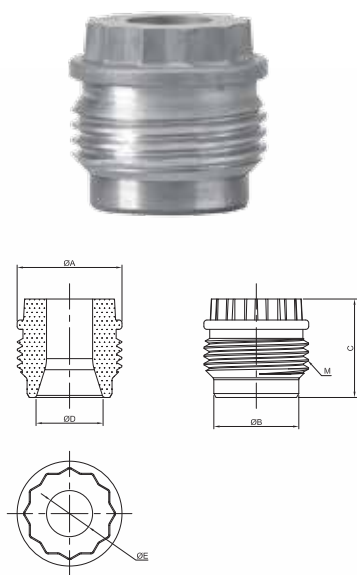
Nozzle cased in threaded steel sleeve

Unit: mm

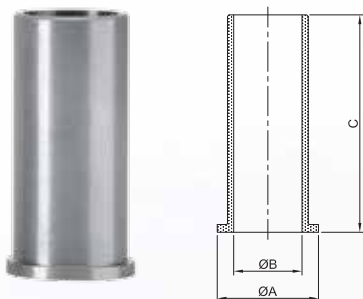
Stock No.	ΦA	C	ΦE	M
PC2300001	20.3	18.9	0.0	1"-14UNS-2A
PC2305501	20.3	18.9	5.6	1"-14UNS-2A
PC2306301	20.3	18.9	6.4	1"-14UNS-2A
PC2307101	20.3	18.9	7.1	1"-14UNS-2A
PC2307901	20.3	18.9	7.9	1"-14UNS-2A
PC2308701	20.3	18.9	8.7	1"-14UNS-2A
PC2309501	20.3	18.9	9.5	1"-14UNS-2A
PCS500701	31.8	28.7	5.6	1-1/2"-12UNF-2A
PCS500801	31.8	28.7	6.4	1-1/2"-12UNF-2A
PCS500901	31.8	28.7	7.1	1-1/2"-12UNF-2A
PCS501001	31.8	28.7	7.9	1-1/2"-12UNF-2A
PCS501101	31.8	28.7	8.7	1-1/2"-12UNF-2A
PCS501201	31.8	28.7	9.5	1-1/2"-12UNF-2A
PCS501301	31.8	28.7	10.3	1-1/2"-12UNF-2A
PCS501401	31.8	28.7	11.1	1-1/2"-12UNF-2A
PCS501501	31.8	28.7	11.9	1-1/2"-12UNF-2A

Nozzle cased in threaded steel sleeve

Unit: mm



Stock No.	ΦA	C	ΦE	M
PDX100701	27.1	25.4	5.6	1-1/16-12UN-2A
PDX100801	27.1	25.4	6.4	1-1/16-12UN-2A
PDX100901	27.1	25.4	7.1	1-1/16-12UN-2A
PDX101001	27.1	25.4	7.9	1-1/16-12UN-2A
PDX101101	27.1	25.4	8.7	1-1/16-12UN-2A
PDX101201	27.1	25.4	9.5	1-1/16-12UN-2A
PDX101301	27.1	25.4	10.3	1-1/16-12UN-2A
PDX101401	27.1	25.4	11.1	1-1/16-12UN-2A
PDX101501	27.1	25.4	11.9	1-1/16-12UN-2A
PDX101601	27.1	25.4	12.7	1-1/16-12UN-2A
PDX101701	27.1	25.4	13.5	1-1/16-12UN-2A
PDX101801	27.1	25.4	14.3	1-1/16-12UN-2A
PDX101901	27.1	25.4	15.1	1-1/16-12UN-2A
PDX102001	27.1	25.4	15.9	1-1/16-12UN-2A
PDX102101	27.1	25.4	16.7	1-1/16-12UN-2A
PDX102201	27.1	25.4	17.5	1-1/16-12UN-2A

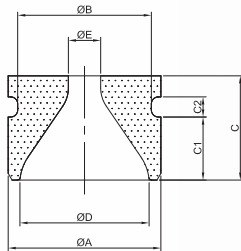


Jet sleeve

Unit: mm

Stock No.	ΦA	ΦB	C
HX022011	28.5	22.0	40.0
HX022012	28.5	22.0	70.0
HX018001	24.6	18.0	35.0
HX018002	24.6	18.0	50.0
HX018006	22.9	18.0	35.0
HX011006	16.5	11.5	40.0

Nozzles for Roller Cone Drill Bits



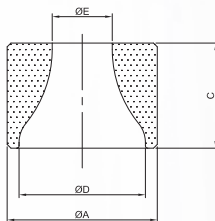
Grooved nozzle

Unit: mm

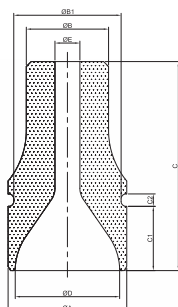
Stock No.	ΦA	C	ΦD	ΦE
PCK100801	18.9	18.8	14.7	6.4
PCK101301	18.9	18.8	14.7	10.3
PCK101601	18.9	18.8	14.7	12.7
PCK200701	22.1	18.8	17.5	5.5
PCK200901	22.1	18.8	17.5	7.1
PCK201401	22.1	18.8	17.5	11.1
PCK201601	22.1	18.8	17.5	12.7
PCK300901	30.0	20.6	25.4	7.1
PCK301301	30.0	20.6	25.4	10.3
PCK302201	30.0	20.6	25.4	17.5
PCK401001	33.2	27.0	28.6	7.9
PCK502801	37.8	28.6	33.3	22.2
PCK503201	37.8	28.6	33.3	25.4

Non-shrouded nozzle

Unit: mm



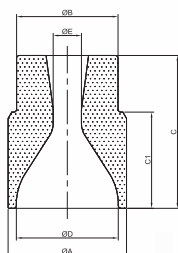
Stock No.	ΦA	C	ΦD	ΦE
PCS500701	31.8	22.2	26.7	5.6
PCS500901	31.8	22.2	26.7	7.1
PCS501201	31.8	22.2	26.7	9.5
PCS502001	31.8	22.2	26.7	15.9
PC2305501	20.3	12.6	15.2	5.6
PC2314201	20.3	12.6	15.2	14.3
PC2309202	20.4	12.7	15.9	9.3



Grooved extended nozzle

Unit: mm

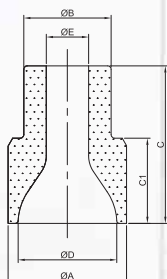
Stock No.	ΦA	C	ΦD	ΦE
PCL100901	30.0	46.0	25.4	7.1
PCL101401	30.0	46.0	25.4	11.1
PCL200901	33.2	61.9	28.6	7.1
PCL201301	33.2	61.9	28.6	10.3
PCL201501	33.2	61.9	28.6	11.9
PCL301001	37.8	66.7	33.3	8.0
PCL301501	37.8	66.7	33.3	11.9
PCL302001	37.8	66.7	33.3	15.9



Extended nozzle

Unit: mm

Stock No.	ΦA	C	ΦD	ΦE
PCZ101001	33.2	42.9	28.6	7.9
PCZ101201	33.2	42.9	28.6	9.5
PCZ101401	33.2	42.9	28.7	11.1
PCZ101402	33.2	42.9	28.6	11.4
PCZ101602	33.2	42.9	28.6	12.9
PCZ101802	33.2	42.9	28.6	14.5
PCZ102002	33.2	42.9	28.6	16.0
PCZ102202	33.2	42.9	28.6	17.5
PCZ102402	33.2	42.9	28.6	19.1



Unit: mm

Stock No.	ΦA	C	ΦD	ΦE
PCL400801	26.8	35.7	22.2	6.4
PCL401101	26.8	35.7	22.2	8.7
PCL401601	26.8	35.7	22.2	12.7
PCL501001	33.2	42.9	28.6	7.9
PCL501301	33.2	42.9	28.6	10.3
PCL501801	33.2	42.9	28.6	14.3
PCL502401	33.2	42.9	28.6	19.1

Cemented Carbide Sleeves For Oil Pump



The cemented carbide bushings & sleeves are mainly used for rotating support, seal, and anti-trust of the axle in the motor of ESP, protector and centrifuge that work in the extreme adverse conditions.

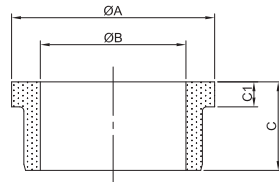
As a fully-integrated supplier, we manage the full manufacturing life cycle of your product. Managing the entire process ensures that our products are the highest quality—every time. It also allows us the flexibility to meet each customer's unique needs, such as grade composition, part geometry and batch size.



Electric submersible pump



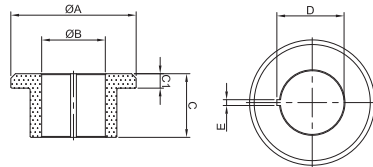
Sleeves for Electric Submersible Pump



Convex stage sleeve

Unit: mm

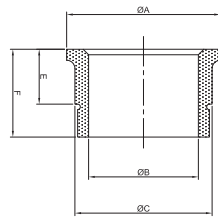
Stock No.	ΦA	ΦB	C
HX018001	24.6	18.0	35.0
HX018002	24.6	18.0	50.0
HX018004	24.6	18.0	25.0
HX035001	48.9	35.1	21.3
HX047002	63.2	47.1	28.5



Convex stage sleeve with keyway

Unit: mm

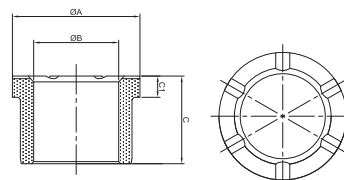
Stock No.	ΦA	ΦB	C	D	E
HX034001	34.4	17.5	17.5	18.4	1.6
HX034002	34.7	17.5	12.7	18.4	1.6
HX034003	36.8	22.3	15.1	23.2	1.6



Convex stage sleeve with round groove

Unit: mm

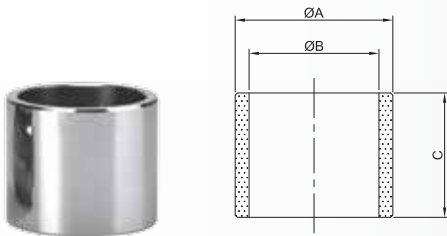
Stock No.	ΦA	ΦB	ΦC	E	F
HX028001	28.0	20.0	25.0	13.0	16.0
HX029001	29.0	22.0	27.0	14.0	17.0
HX034001	34.0	24.0	30.0	15.0	18.0



Convex stage sleeve with oil groove

Unit: mm

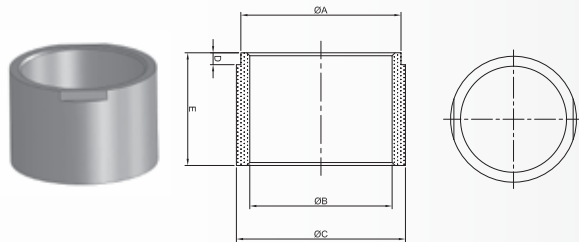
Stock No.	ΦA	ΦB	C
HX045001	24.0	16.0	16.5
HX045002	27.0	19.0	16.5



Straight tube sleeve

Unit: mm

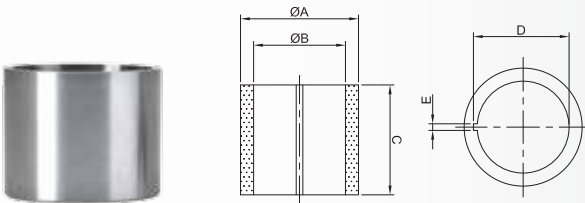
Stock No.	ΦA	ΦB	C
HH101501	20.4	15.8	19.3
HH102202	26.9	22.2	22.2
HH103201	37.0	48.7	32.1
HH104504	53.6	45.5	37.7
HH105101	59.1	51.1	58.5
HH106201	69.9	62.2	24.1



Straight tube sleeve

Unit: mm

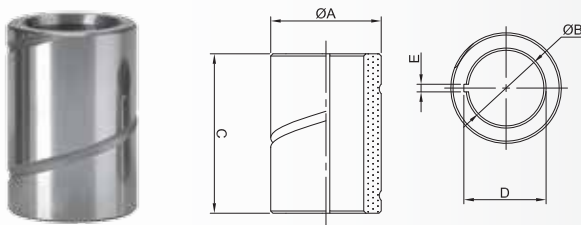
Stock No.	ΦA	ΦB	C	D	E
HX054004	54.0	48.0	57.0	4.0	54.0
HX058005	58.0	50.0	60.0	5.0	60.0
HX060003	60.0	53.0	65.0	8.0	65.0



Straight tube sleeve with keyway

Unit: mm

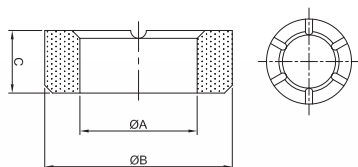
Stock No.	ΦA	ΦB	C	D	E
HX023001	23.8	17.5	14.1	18.4	1.6
HX023002	23.8	17.5	38.1	18.4	1.6
HX025001	36.5	30.2	34.4	31.1	1.6
HX025002	38.1	30.2	50.8	31.1	1.6
HX024001	28.6	22.3	15.6	23.2	1.6
HX024002	28.6	22.3	38.1	23.2	1.6
HX024003	28.6	22.3	26.6	23.2	1.6



Straight tube sleeve with keyway and spiral groove

Unit: mm

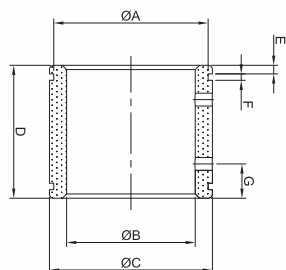
Stock No.	ΦA	ΦB	C	D	E
HX017004	25.0	17.0	36.0	17.9	1.6
HX020007	28.0	20.0	36.0	20.9	1.6
HX022010	28.0	22.0	36.0	23.0	2.0
HX017005	25.0	17.0	32.0	17.9	1.6



Straight tube sleeve with oil groove

Unit: mm

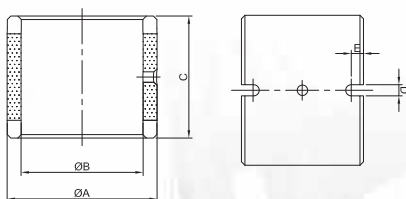
Stock No.	ΦA	ΦB	C	R
HX034001	15.0	27.0	8.0	2.5
HX034002	18.0	30.0	12.0	2.5
HX034003	28.0	38.0	16.0	2.5



Sleeve with round groove and oil hole

Unit: mm

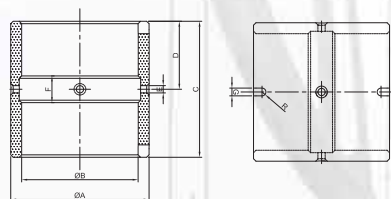
Stock No.	ΦA	ΦB	ΦC	D	E	F
HX017004	58.0	53.0	61.0	40.0	2.0	1.5
HX017005	45.0	40.0	48.0	35.0	3.0	2.0
HX017006	52.0	45.0	58.0	45.0	4.0	2.2



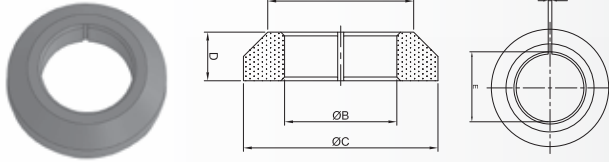
Sleeve with aligning groove and oil hole

Unit: mm

Stock No.	ΦA	ΦB	ΦC	D	E
HX042003	42.0	34.0	34.0	3.1	3.4



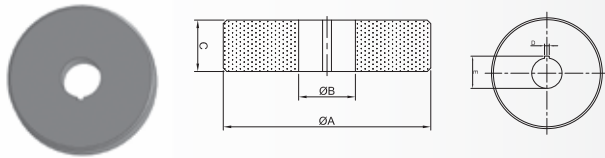
Stock No.	ΦA	ΦB	C	D	ΦE	F	G
HX056009	56.0	46.0	55.0	27.0	2.0	9.0	3.0



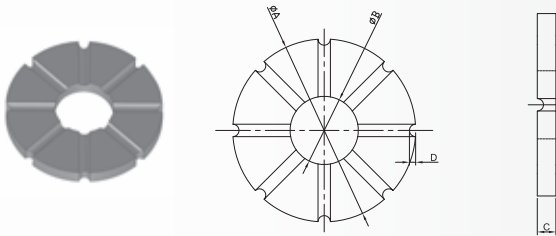
Thrust sleeve with keyway

Unit: mm

Stock No.	ΦA	ΦB	ΦC	D	E	F
HX045002	45.0	36.0	60.0	13.0	39.0	1.8
HX040003	40.0	35.0	55.0	13.0	37.0	2.1
HX052004	52.0	37.0	63.0	13.0	40.0	3.2



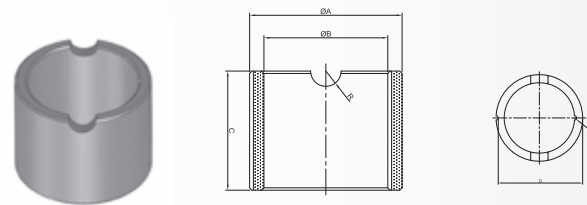
Stock No.	ΦA	ΦB	ΦC	D	E
HX028033	115.0	30.0	28.0	4.0	33.0



Thrust sleeve with oil groove

Unit: mm

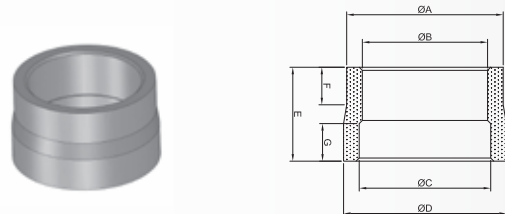
Stock No.	ΦA	ΦB	C	D
HX059001	59.0	22.0	6.0	2.0
HX065001	65.0	25.0	8.0	2.8
HX085001	85.0	32.0	12.0	3.5



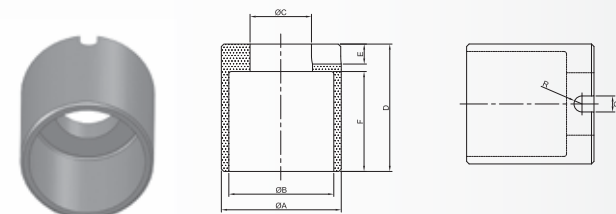
Nonstandard sleeve

Unit: mm

Stock No.	ΦA	ΦB	C	D	R
HX030003	30.0	25.0	24.0	29.0	3.2



Stock No.	ΦA	ΦB	ΦC	ΦD	E
HX025007	25.0	19.0	20.0	26.0	16.0



Stock No.	ΦA	ΦB	D	E	F
HX048001	47.0	4.0	50.0	7.0	42.0

Cemented Carbide Wear Parts for Valves

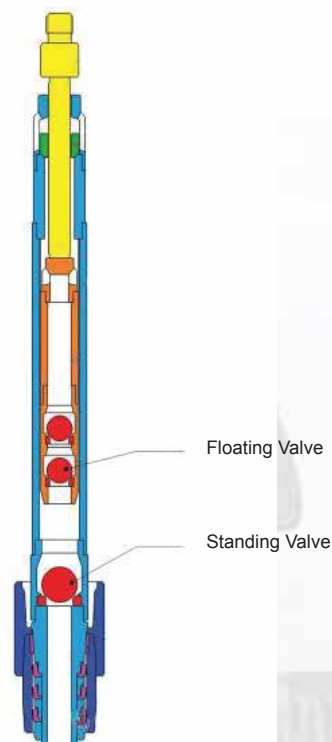


The wear parts for valves mainly include valve disks, valve cages, valve balls and seats as well as other component that needs excellent corrosion & erosion resistance. The valve disk is widely used in the choke valve and control valve to control the fluid volume and pressure accurately; the valve balls & seats are majorly used to the stationary and roving unidirectional valve in various tube and rod defueling oil pump.

Cobalt bonded, Nickel bonded and Nickel-Titanium bonded grades are available for highly corrosive and serve service applications. The unique property with good balance of toughness and hardness, cemented carbide balls & seats achieves high pumping effect and a long pump check cycle.

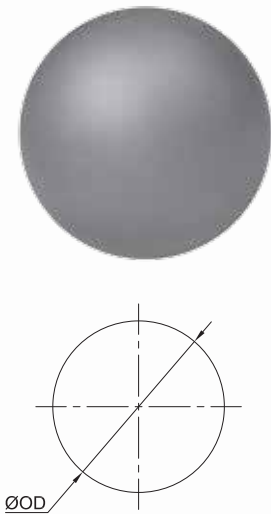


Choke Valve



Rod defueling pump

Valve Ball



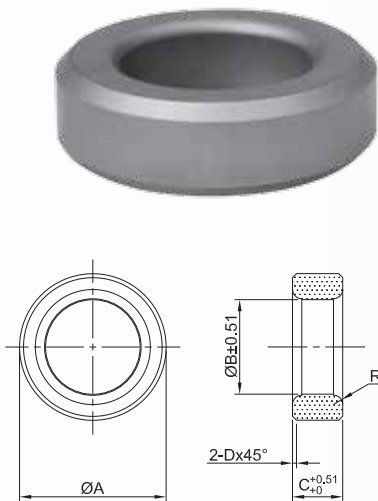
Valve ball

Unit: mm

API type	Stock No.	Size	OD	
V11-106	VQ115801	5/8"	Ø15.9	+0.9 +0.6
V11-125	VQ119001	3/4"	Ø19.1	+1.0 +0.8
V11-150	VQ123801	15/16"	Ø23.8	+1.0 +0.8
V11-175	VQ128501	1-1/8"	Ø28.6	+1.1 +0.8
V11-200	VQ131701	1-1/4"	Ø31.8	+1.5 +1.0
V11-225	VQ134901	1-3/8"	Ø34.9	+1.5 +1.0
V11-250	VQ142801	1-11/16"	Ø42.9	+1.5 +1.0
V11-375	VQ157101	2-1/4"	Ø57.2	+1.8 +1.3

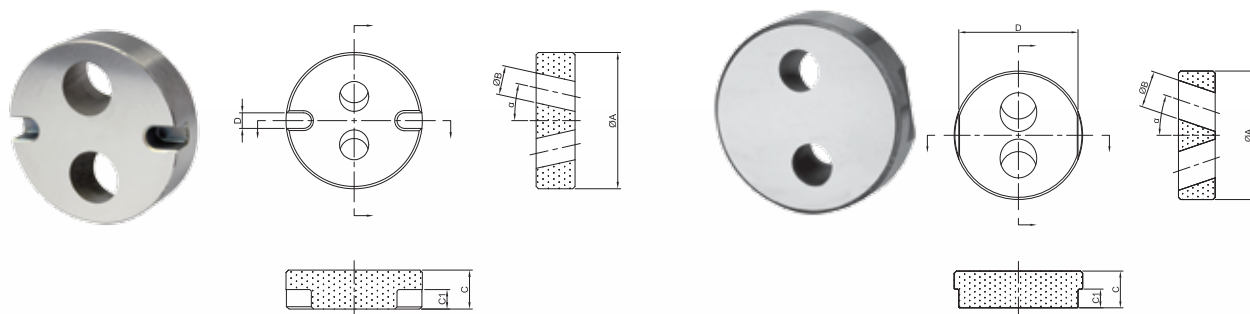
Valve seat

Unit: mm



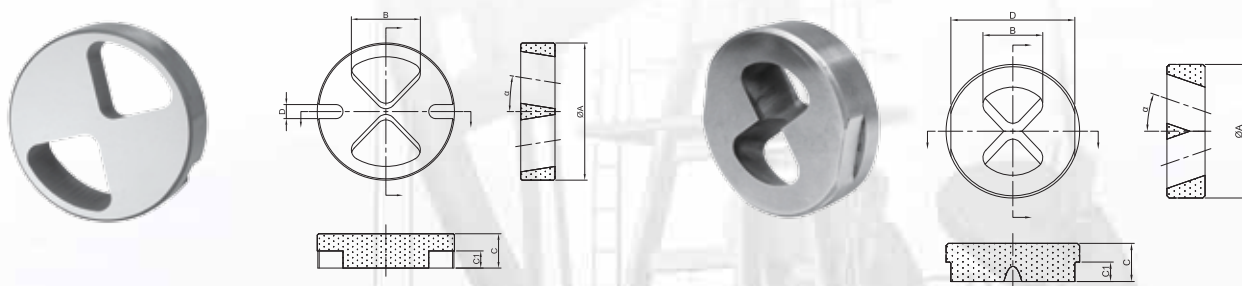
API type	Stock No.	Size	A	B	C	D	R
V11-106	VS10201101201	1-1/16"	Ø20.4 +0.5 +0	Ø11.7	13.0	1.0	1.6
V11-125	VS10231301201	1-1/4"	Ø23.6 +0.5 +0	Ø14	13.0	1.0	1.6
V11-150	VS10291701201	1-1/2"	Ø29.9 +0.5 +0	Ø17	13.0	1.3	2.0
V11-175	VS10352001201	1-3/4"	Ø35.5 +0.5 +0	Ø21	13.0	1.5	2.4
V11-200	VS10372401201	2"	Ø37.8 +0.5 +0	Ø24.4	13.0	1.5	2.4
V11-225	VS10432601201	2-1/4"	Ø43.9 +0.6 +0	Ø26.9	13.0	2.0	2.4
V11-250	VS10513301201	2-3/4"	Ø51.3 +0.6 +0	Ø33.3	13.0	2.0	2.4
V11-375	VS10784701901	3-3/4"	Ø78.3 +0.6 +0	Ø47.8	19.3	2.5	3.2

Valve Disk



Unit: mm

Stock No.	ΦA	ΦB	C	D
VD034002	34.9	3.2	12.8	5.3
VD034003	34.9	6.4	12.8	5.3
VD034004	34.9	9.5	12.8	5.3
VD044003	44.5	14.3	12.7	5.1
VD044008	44.5	3.2	12.7	5.2
VD044009	44.5	4.8	12.7	5.2
VD044010	44.5	6.4	12.7	5.2
VD044011	44.5	9.5	12.7	5.2
VD044012	44.5	12.7	12.7	5.2
VD044026	44.5	9.5	12.7	5.1
VD044030	44.5	12.7	12.7	5.1
VD063006	63.5	9.5	19.1	6.9

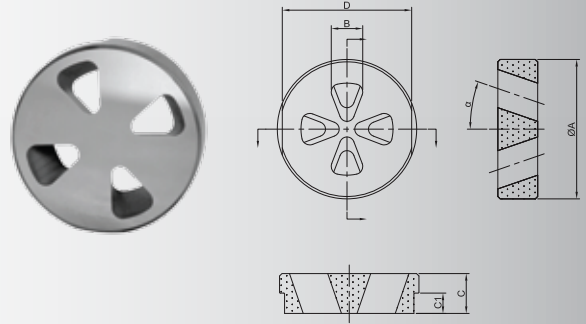
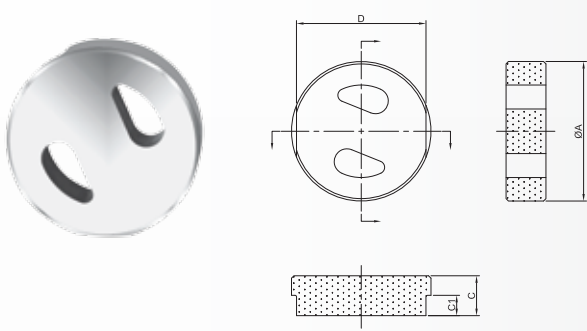


Unit: mm

Unit: mm

Stock No.	ΦA	ΦB	C	D
VD034007	34.9	16.8	12.8	5.3
VD044013	44.5	21.4	12.7	5.2
VD050009	50.8	25.6	12.7	5.2
VD067001	67.3	35.4	12.7	4.8
VD090002	90.5	42.6	19.1	7.0

Stock No.	ΦA	ΦB	C	D
VD044007	44.5	19.9	12.7	41.3



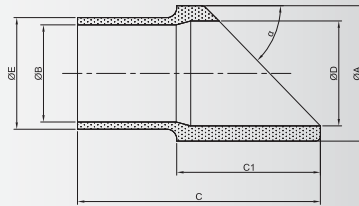
Other shape

Unit: mm

Stock No.	ΦA	C	D
VD044028	44.5	12.7	41.3

Unit: mm

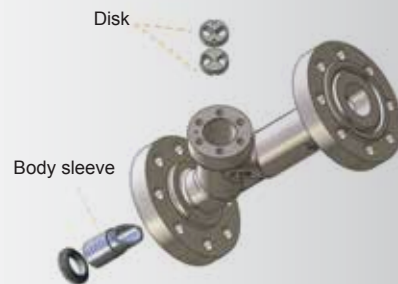
Stock No.	ΦA	ΦB	C	D
VD044006	44.5	10.0	12.7	41.3

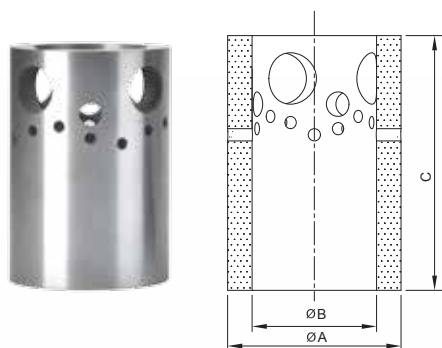


Body sleeves

Unit: mm

Stock No.	ΦA	ΦB	C	ΦD	ΦE
NX050011	44.5	31.8	79.8	34.3	36.5

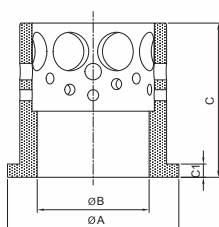




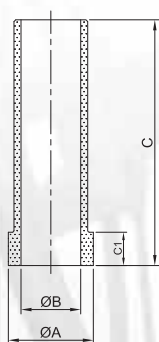
Cages

Unit: mm

Stock No.	ΦA	ΦB	C
HX050007	70.8	50.8	104.0
HX076007	95.3	76.2	111.0



Stock No.	ΦA	ΦB	C
HX101001	155.5	101.6	140.0



Valve seat

Unit: mm

Stock No.	ΦA	ΦB	C
HX023015	17.0	11.1	76.0
HX023016	24.2	17.5	40.0
HX023017	24.2	17.5	50.0
HX023018	24.2	17.5	60.0
HX023019	24.2	17.5	70.0
HX023020	24.2	17.5	80.0
HX023021	24.2	17.5	95.0

Gage Bricks & Stabilizer Blanks

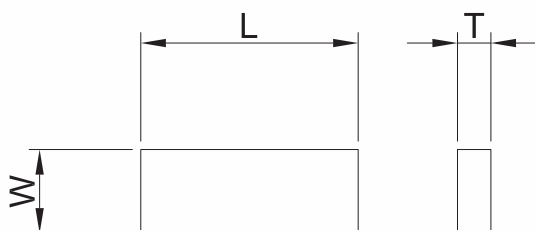


Gage bricks are mainly used to protect the drill bit steel body and the PDC or carbide cutters; the stabilizer blanks are used as wear resistant parts for maintaining drilling accuracy. A wide range of styles and sizes combinations are provided to meet most of your required applications.

Custom-molded sizes and material composition could be provided upon drawings and requirements from customers.



Wear Tile



Unit: mm

Stock No.	L	W	T
KG12007001	7.5	5.0	1.5
KG12013001	13.0	5.0	1.5
KG12013002	13.0	5.0	2.0





JIUJIANG GOLDEN EGRET HARD MATERIAL CO.,LTD.

Add: No.18 of ChunJiang Road, City-West Port District,
Economic-Technological Development Area, JiuJiang City, Jiangxi , China
Tel: +86-792-675 8617 Fax: +86-792-684 7610
PC: 332000
Email: gehmcx@xctc.com
[Http://www.gehm.com.cn/](http://www.gehm.com.cn/)



2019